

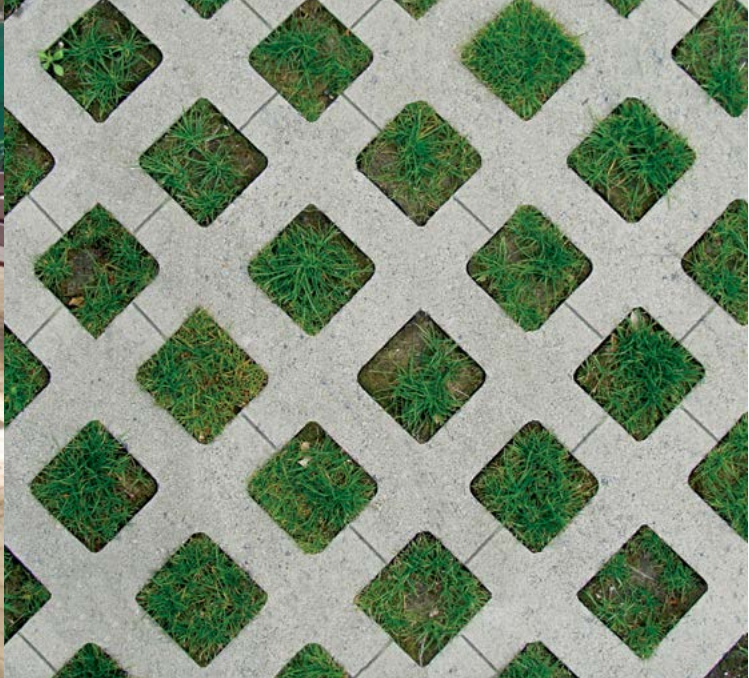


MEXSTONE

IMPROVING LIFESTYLES



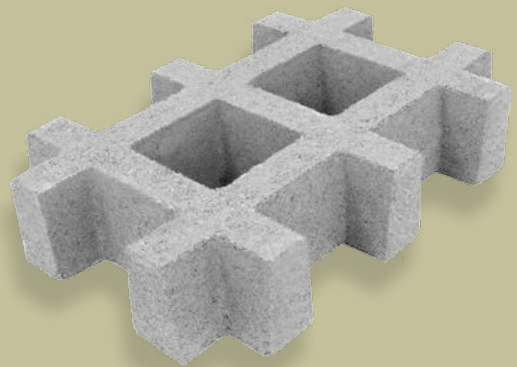
**CONCRETE INTERLOCKING PAVERS
&
ARCHITECTURAL BLOCKS**



Orion



Grass Stone



The **Orion** paver is a hexagonal figure, ideal design for your outdoor spaces, it also provides the feature of easy installation because of its three faces that helps to align itself at its placement. The form tries to simulate a bee hive.

If you are enthusiastic about respecting the environment, the **Grass Stone** is a solution; our paver is part of the trend of Green Architecture; its features are that it permits drainage of water to the soil, it allows traffic both pedestrian and vehicular with the benefits of the presence of grass.

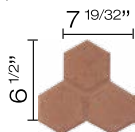


Terra Cotta USNORIS001 Rubi Red USNORIS004 Tobacco USNORIS010 Gray USNORIS033 Wheat USNORIS040

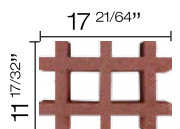


Terra Cotta USNEPIS001 Rubi Red USNEPIS004 Tobacco USNEPIS010 Gray USNEPIS033 Black USNEPIS040

Dimensions: $7 \frac{19}{32}'' - 6 \frac{1}{2}''$ (19.1 cm – 16.5 cm)
 Thickness: $2 \frac{3}{8}''$ (6 cm)
 Stones /Sq. Ft.: 2.88 pc
 Weight /Stone: 9.26 lbs (4.2 kg)
 Mechanical Resistance: 8,000 psi (562 Kg/cm²)
 Pieces per Pallet: 360



Dimensions: $11 \frac{17}{32}'' - 17 \frac{21}{64}''$ (29.3 cm – 44 cm)
 Thickness: $3 \frac{17}{32}''$ (9 cm)
 Stones /Sq. Ft.: 0.72 pc
 Weight /Stone: 29.32 lbs (13.3 kg)
 Mechanical Resistance: 8,000 psi (562 Kg/cm²)
 Pieces per Pallet: 80





Aries



Titan



Our **Aries** stone boasts a very elegant form that will enhance your home landscape and that will create warm walking experiences.

The **Titan** stone is a very worldwide popular figure for its esthetical qualities and the diversity of patterns that can be created with it.

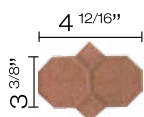


Terra Cotta USNARIS001 Rubi Red USNARIS004 Tobbaco USNARIS010 Gray USNARIS033 Wheat USNARIS040

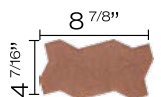


Terra Cotta USNTIIS001 Rubi Red USNTIIS004 Tobbaco USNTIIS010 Gray USNTIIS033 Wheat USNTIIS040

Dimensions: 3 ³/₈" - 4 ¹²/₁₆" (23.8 cm - 12 cm)
 Thickness: 2 ³/₈" (6 cm)
 Stones /Sq. Ft.: 3.25 pc
 Weight /Stone: 8.16 lbs (3.7 kg)
 Mechanical Resistance: 8,000 psi (562 Kg/cm²)
 Pieces per Pallet: 336

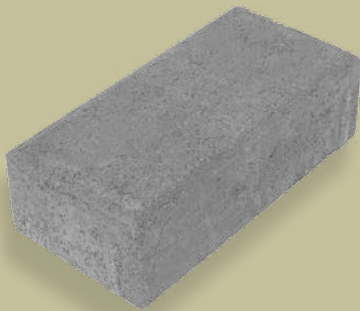


Dimensions: 8 ⁷/₈" - 4 ⁷/₁₆" (22.5 cm - 11.25 cm)
 Thickness: 2 ³/₈" (6 cm)
 Stones /Sq. Ft.: 3.6 pc
 Weight /Stone: 7.05 lbs (3.2 kg)
 Mechanical Resistance: 8,000 psi (562 Kg/cm²)
 Pieces per Pallet: 440





Holland



Grand Holland



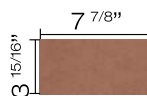
The **Holland** stone is by far the most accepted design in USA and Europe, and it is available in two different thickness, 2 3/8" and 3 1/8" (6 and 8 cm).

Our **Grand Holland** stone is a big Holland format created to cover extended pedestrian areas, squares, marketplaces, courts, malls or alike. The combination of our Grand Holland and our Plaza 15x15 stone creates beautiful modern patterns that will enhance any landscape project.



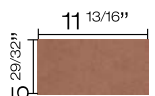
Terra Cotta USNH0IS001 Rubi Red USNH0IS004 Tobbaco USNH0IS010 Gray USNH0IS033 Wheat USNH0IS040

Dimensions: 3 15/16" – 7 7/8" (10 cm – 20 cm)
 Thickness: 2 3/8" and 3 1/8" (6 and 8 cm)
 Stones /Sq. Ft.: 4.65 pc
 Weight /Stone: 5.51 and 7.72 lbs (2.5 and 3.5 kg)
 Mechanical Resistance: 8,000 psi (562 Kg/cm²)
 Pieces per Pallet: 480 and 360 respectively.



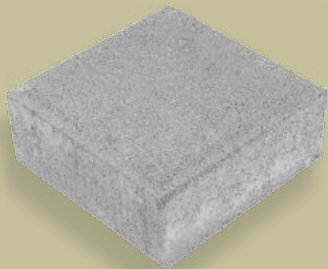
Terra Cotta USNGH0IS001 Rubi Red USNGH0IS004 Tobbaco USNGH0IS010 Gray USNGH0IS033 Wheat USNGH0IS040

Dimensions: 11 13/16" – 5 29/32" (30 cm – 15 cm)
 Thickness: 2 3/8" (6 cm)
 Stones /Sq. Ft.: 2.04 pc
 Weight /Stone: 13 lbs (5.9 kg)
 Mechanical Resistance: 8,000 psi (562 Kg/cm²)
 Pieces per Pallet: 216

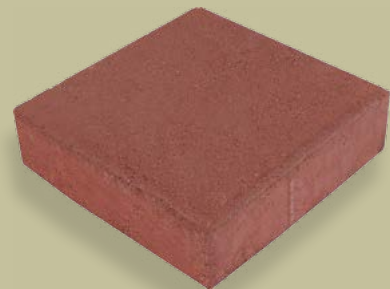




Plaza 15x15



Plaza 20x20



Our **Plaza 15X15** is a small stone that enables designs to be dynamic, full of movement and ideal for pedestrian areas.

The stone **Plaza 20X20** is a square versatile paver; it can create traditional patterns, and can be used with other profiles to obtain modern designs. It is available in two different thickness, 2 3/8" and 3 1/8" (6 and 8 cm).



Terra Cotta
USNP15IS001



Rubi Red
USNP15IS004



Tobbaco
USNP15IS010

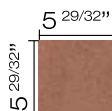


Gray
USNP15IS033



Black
USNP15IP104

Dimensions: 5 29/32" – 5 29/32" (15 cm – 15 cm)
 Thickness: 2 3/8" (6 cm)
 Stones /Sq. Ft.: 4.09 pc
 Weight /Stone: 6.39 lbs (2.9 kg)
 Mechanical Resistance: 8,000 psi (562 Kg/cm²)
 Pieces per Pallet: 432



Terra Cotta
USNP20IS001



Rubi Red
USNP20IS004



Tobbaco
USNP20IS010

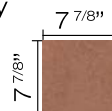


Gray
USNP20IS033



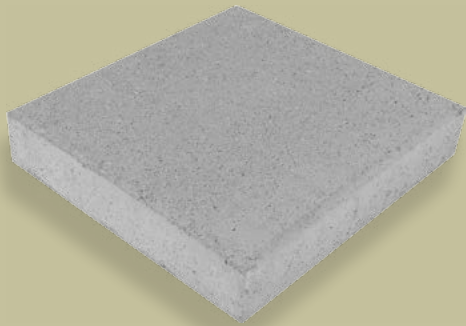
Black
USNP20IP104

Dimensions: 7 7/8" – 7 7/8" (20 cm – 20 cm)
 Thickness: 2 3/8" and 3 1/8" (6 and 8 cm)
 Stones /Sq. Ft.: 2.32 pc
 Weight /Stone: 11.90 and 15.76 lbs (5.4 and 7.15 kg)
 Mechanical Resistance: 8,000 psi (562 Kg/cm²)
 Pieces per Pallet: 180 and 270, respectively





Plaza 30x30

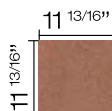


Plaza 30X30 paver is commonly used in large pedestrian areas or light weight vehicular parking lots. It also can be used with other profiles or small Plaza stones to achieve modern and dynamic patterns.

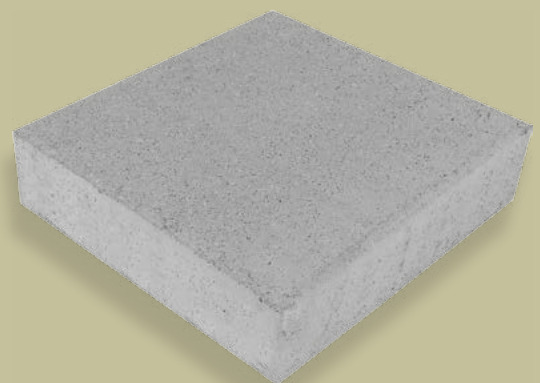


Terra Cotta USNP30IS001 Rubi Red USNP30IS004 Tobbaco USNP30IS010 Gray USNP30IS033 Black USNP30IP104

Dimensions: 11 ¹³/₁₆" – 11 ¹³/₁₆" (30 cm – 30 cm)
 Thickness: 2 ³/₈" (6 cm)
 Stones /Sq. Ft.: 1.02 pc
 Weight /Stone: 26.01 lbs (11.8 kg)
 Mechanical Resistance: 8,000 psi (562 Kg/cm²)
 Pieces per Pallet: 108



Plaza 40x40

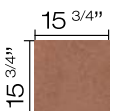


Our **Plaza 40X40** will create magnificent landscapes, considering that the profile matches with other Plaza pavers. It is available in 3 1/8".



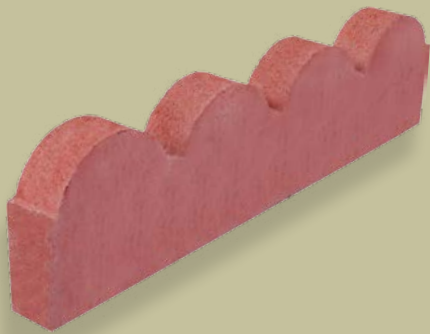
Terra Cotta USNP40IS001 Rubi Red USNP40IS004 Tobbaco USNP40IS010 Gray USNP40IS033 Black USNP40IP104

Dimensions: 15 ³/₄" – 15 ³/₄" (40 cm – 40 cm)
 Thickness: 3 1/8" (8 cm)
 Stones /Sq. Ft.: 0.58 pc
 Weight /Stone: 61.73 lbs (28 kg)
 Mechanical Resistance: 8,000 psi (562 Kg/cm²)
 Pieces per Pallet: 42





Scalloped Edger Border



Split Face Architectural Block



The **Scalloped Edger Border** stone will offer the perfect architectural touch to your landscape, and it will boost your gardening project.



Terra Cotta
USNBJS001

Rubi Red
USNBJS004

Tobbaco
USNBJS010

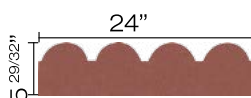


Gray
USNBJS033



Wheat
USNBJS040

Dimensions: 5 ²⁹/₃₂" – 24" (15 cm – 61 cm)
 Thickness: 2" (5 cm)
 Stones /Sq. Ft.: 0.5 pc
 Weight /Stone: 34.61 lbs (15.7 kg)
 Mechanical Resistance: 4,000 psi (280 Kg/cm²)
 Pieces per Pallet: 152



Our **Split Face Architectural Block** is a very popular wall enhancer because of the solid and permanent colors. It is the best option for commercial, institutional or industrial projects.



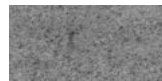
Terra Cotta
USBCPIS001



Rubi Red
USNBCPIS004



Tobbaco
USNBCPIS010



Gray
USNBCPIS033



Wheat
USNBCPIS040

Dimensions: 7 ⁴³/₆₄" – 15 ³/₄" – 6"
 (19.5 cm – 40 cm – 15.24 cm)
 Blocks / Sq. Ft.: 1.16 pc
 Weight /Stone: 30.20 lbs (13.7 kg)
 Mechanical Resistance: 1,280 psi (90 Kg/cm²)
 Pieces per Pallet: 100



Installation Guide

Here are a few simple installation instructions that will help you construct the landscape you are looking for:

First of all, you should consider the basic foundation of the area where the interlocking pavers will be installed:

TOOLS



Gloves



Safety Glasses



Level



Hand Compactor Plate



Wood or Plastic Stakes



Rubber Mallet



Cord



Shovel



Steel PTR



Plastic Paver Restraint



Diamond Saw



Plate Compactor



Aggregate #8 or #9
Gravel 3/4"

PROCESO DE INSTALACIÓN



Workplan



Layout



Levels of
Definition



Excavation



Leveling



Compaction



Borders and
Containment



Installation



Vibration of
Adoquín



Sand Joints



Cleaning of
Paver Stone

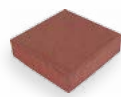


Finished
project

Paver used in installation:



Grass Stone
Gray



Plaza 20x20
Rubi Red

INDICATIONS

1.Planning and Layout: To guarantee the success of your project, you should consider creating a layout of what you have in mind. Define the areas where the paver will be placed, and try to module by model and color. Before the installation starts, you have the chance to place provisionally the stones to have a more clear vision of how your design will appear. The carve process of the paver should be left at the end.

2.Trace and Level Definition: Trace on the installation area the different sections or models that you planned, and consider the inclination of the surface for water drainage, the slope should be downwards away from your house. The least inclination of the pavers is 2% in order to avoid flooding. Use the rope and the stakes to define and guide you through the excavation to define the required depth, direction and inclination.

3.Excavation, Leveling and Compaction: Excavate loose soil and/or to required level, considering that once the base is compact, you should obtain at least 4 to 6 in. for the gravel base (10 to 15 cm); 1 to 1 1/2 in. (2.5 to 5.0 cm), for the sand bedding, and the height of the stone. Compact soil with a Hand Compactor Plate. Note that if the sub-base is soft soil, such as clay, or if the paver surface will be used for vehicular traffic, the height of the gravel base should be thicker (consider contacting your supplier for details). Spread the base gravel in an even layer and compact with the Plate Compactor. Spread the sand sub-base in an even layer and compact with the Plate Compactor avoiding stepping on already compacted and leveled sand bedding.

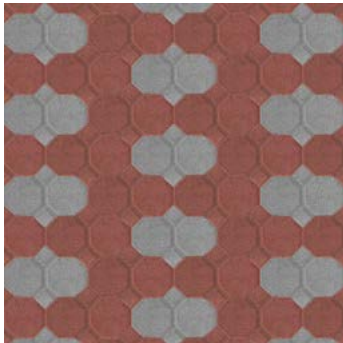
4.Edge Restraint: Now it is the turn for the Plastic Edge Restraint to give form and maintain a sturdy paver installation. Please consider that if the paved surface will be used for light or moderate vehicular traffic, you might need to build a concrete edger of width of 4 in., and with no less than 6 in. of depth from the paver inferior level.

5.Paver Placement: Lay the stones in the designed pattern, taking into account to conserve a 90° angle for best performance of the paved surface. You can use the Rubber Mallet to force paver alignment by hitting them sideways to obtain straight joint lines and right angles. Use the Diamond Saw to cut corners, irregular forms and fittings (use proper safety equipment: Gloves and Safety Glasses).

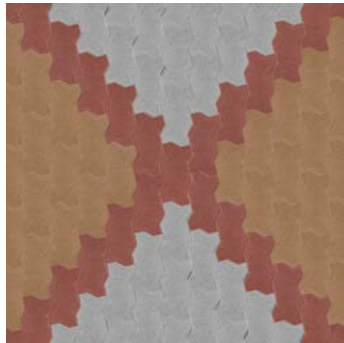
6.Sand Joints and Sealing: Spread a dry sand layer to 1/8" in. thickness over the paved surface. Use the Plate Compactor to help the sand fill the joints and to generate a sturdy and firm installation. Sweep exceeding sand of the surface and wash with low pressure water flow (important, do not use high pressure water equipment, it could take the sand out of the stone joints).

Installation Patterns

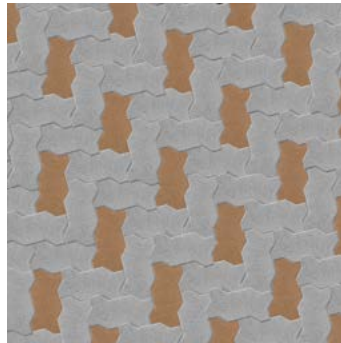
Here are some patterns using our **Mexstone®** line of pavers.



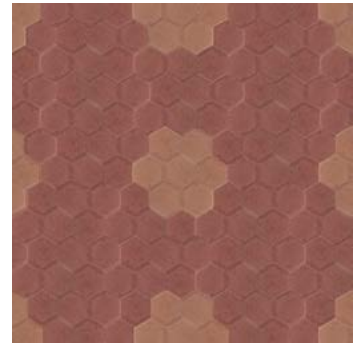
Aries Rubi Red USNARIS004
Aries Gray USNARIS033



Titan Terra Cotta USNTIIS001
Titan Rubi Red USNTIIS004
Titan Gray USNTIIS033



Titan Terra Cotta USNTIIS001
Titan Rubi Red USNTIIS004
Titan Gray USNTIIS033



Orion Terra Cotta USNORIS001
Orion Rubi Red USNORIS004



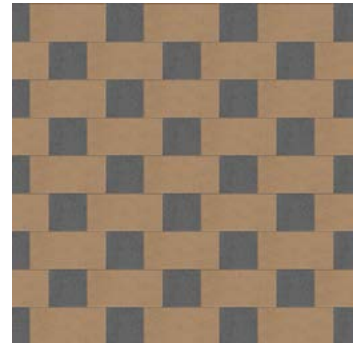
Orion Terra Cotta USNORIS001
Orion Tobbaco USNORIS010
Orion Wheat USNORIS040



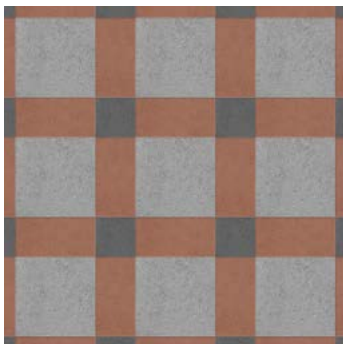
Holland Terra Cotta USNHOIS001
Holland Rubi Red USNHOIS004
Holland Wheat USNHOIS040



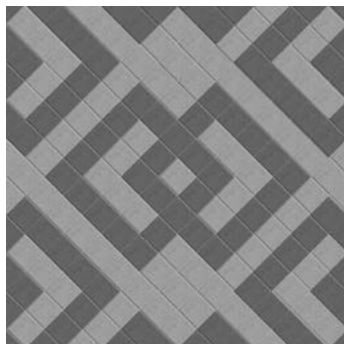
Holland Rubi Red USNHOIS004
Holland Wheat USNHOIS040



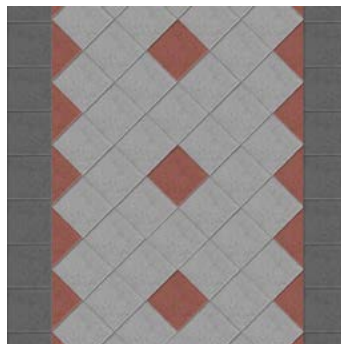
G. Holland Wheat USNGHIS040
Plaza 15x15 Black USNP15IP104



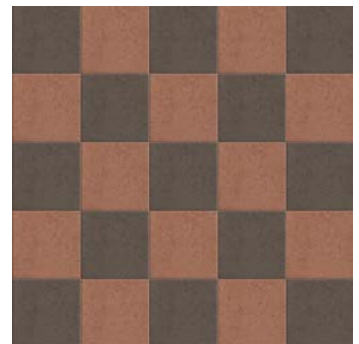
G. Holland Terra Cotta USNGHIS001
Plaza 15x15 Black USNP15IP104
Plaza 30x30 Gray USNP30IS033



Plaza 15x15 Gray USNP15IS033
Plaza 15x15 Black USNP15IP104



Plaza 20x20 Rubi Red USNP20IS004
Plaza 20x20 Gray USNP20IS033
Plaza 20x20 Black USNP20IP104



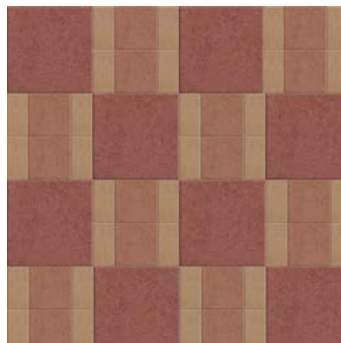
Plaza 30x30 Terra Cotta USNP30IS001
Plaza 30x30 Tobbaco USNP30IS010



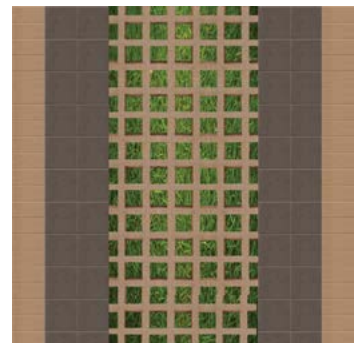
G. Holland Wheat USNGHIS040
P. 15x15 Tobbaco USNP15IS010
P. 30x30 Terra Cotta USNP30IS001



P. 15x15 Terra Cotta USNP15IS001
P. 30x30 Tobbaco USNP30IS010



Holland Wheat USNHOIS040
P. 20x20 Terra Cotta USNP20IS001
P. 40x40 Rubi Red USNP40IS004



Holland Wheat USNHOIS040
P. 20x20 Tobbaco USNP20IS010
Grass Stone Wheat USNEPIS040



MEXSTONE

IMPROVING LIFESTYLES

www.mex-stone.com



Front Cover :
Plaza 20x20
WEATH - TOBBACO

This Page:
Holland
GRAY

